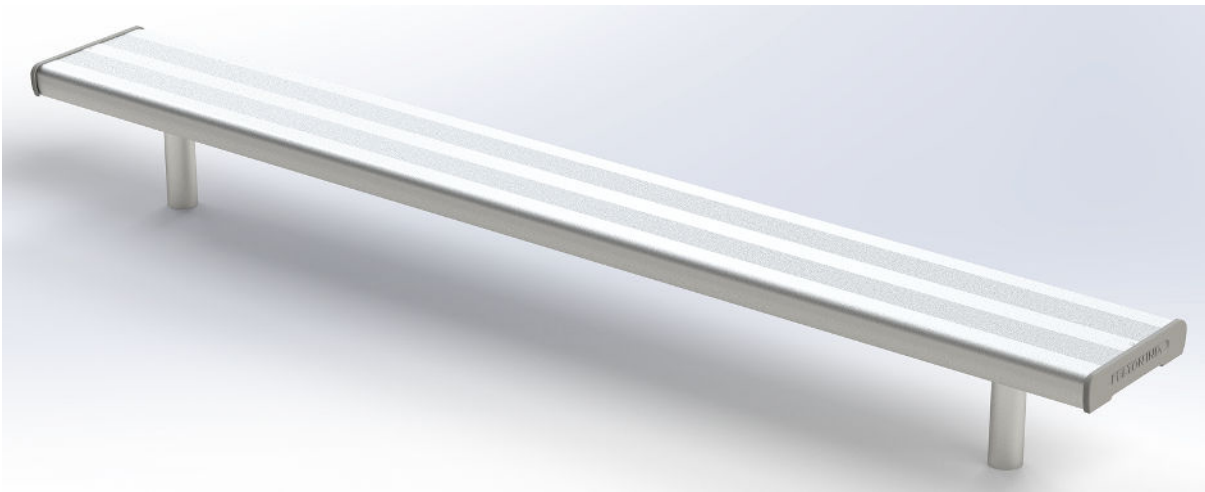


ASSEMBLY INSTRUCTION

Thank You

FOR CHOOSING FELTON INDUSTRIES

KIDS IN-GROUND BENCH SEAT 2mtr  
[Code No: EZYJIG2]



"This product has been  
manufactured in Australia to the  
highest quality standard,  
guaranteeing proven quality,  
durability and low maintenance"



1800 22 00 55

1800 05 91 58

sales@felton.net.au

www.felton.net.au

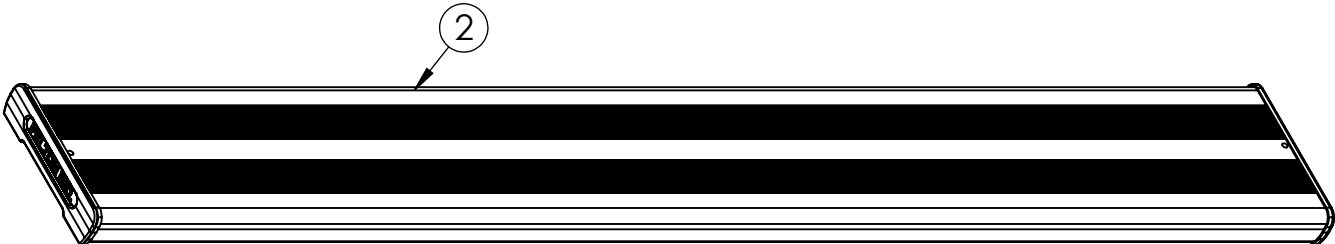
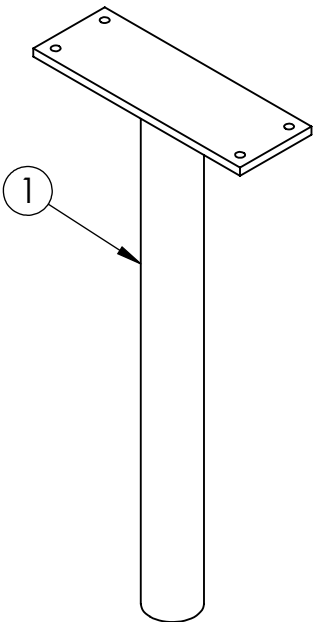
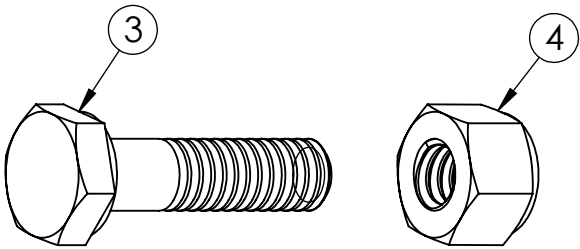


Felton Industries Pty Ltd | ABN: 17 130 687 240

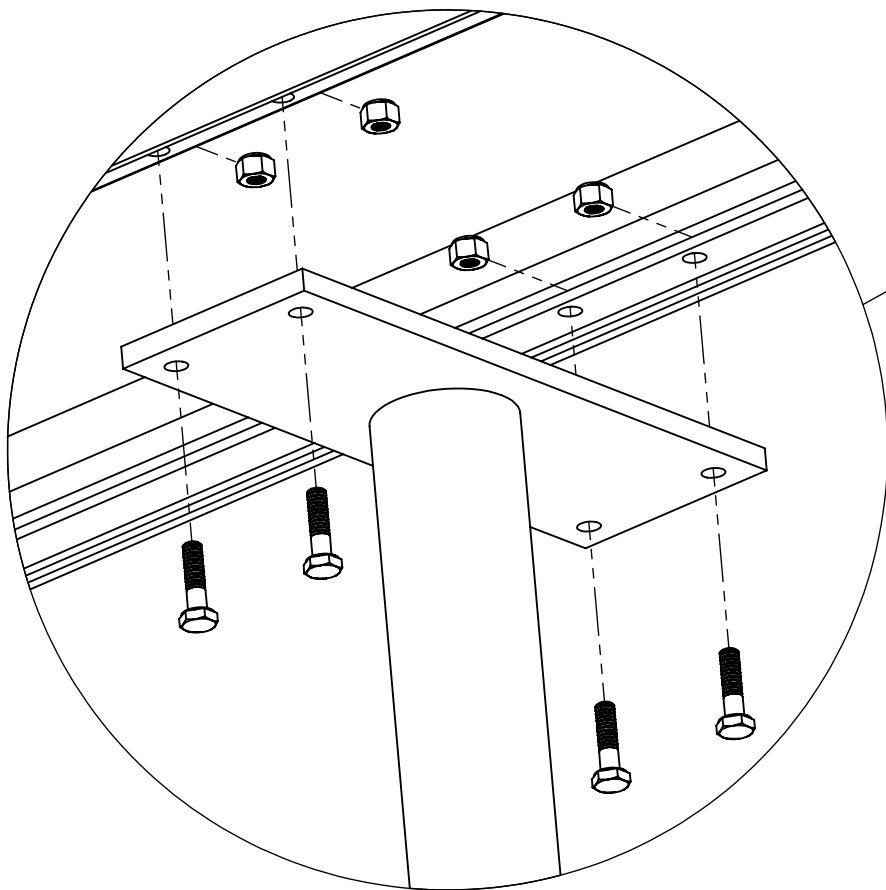
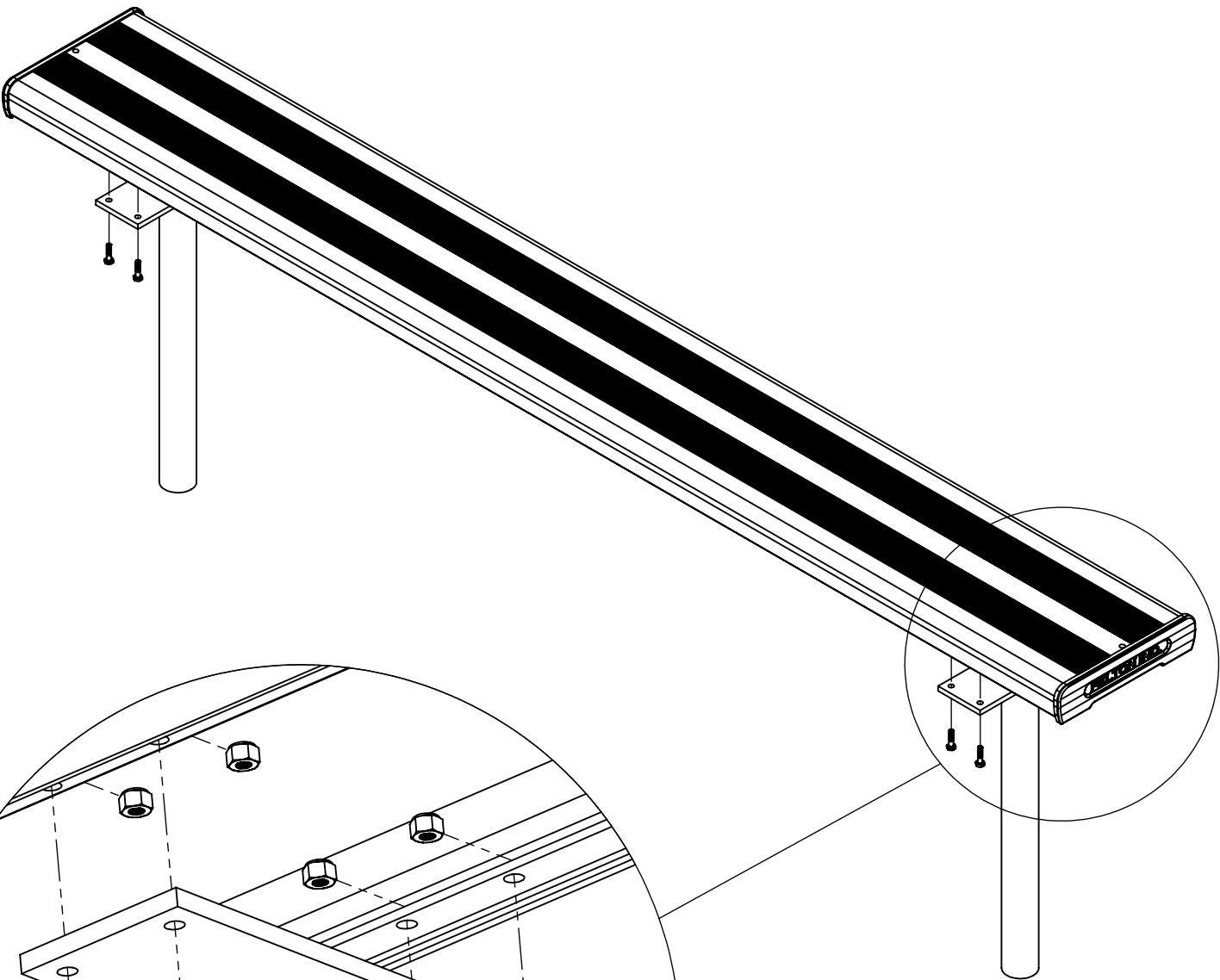


WARNING: This assembly required two or more people as lifting is involved. **Please ensure bolts and nuts are only finger-tightened throughout assembly for flexibility in lining up components.** Bolt and nuts should be securely tightened in place when instructed to do so. Please check all components are included before proceeding with the assembly

ITEM	DESCRIPTION	Qty
1	EZYJIG_IN-GROUND LEG SUPPORT	2
2	EZYJIG2_SEAT PLANK L2000	1
3	AS-NZS 2465 Bolt - 1/4" x 1"	8
4	AS-NZS NYLON Nut - 1/4"	8

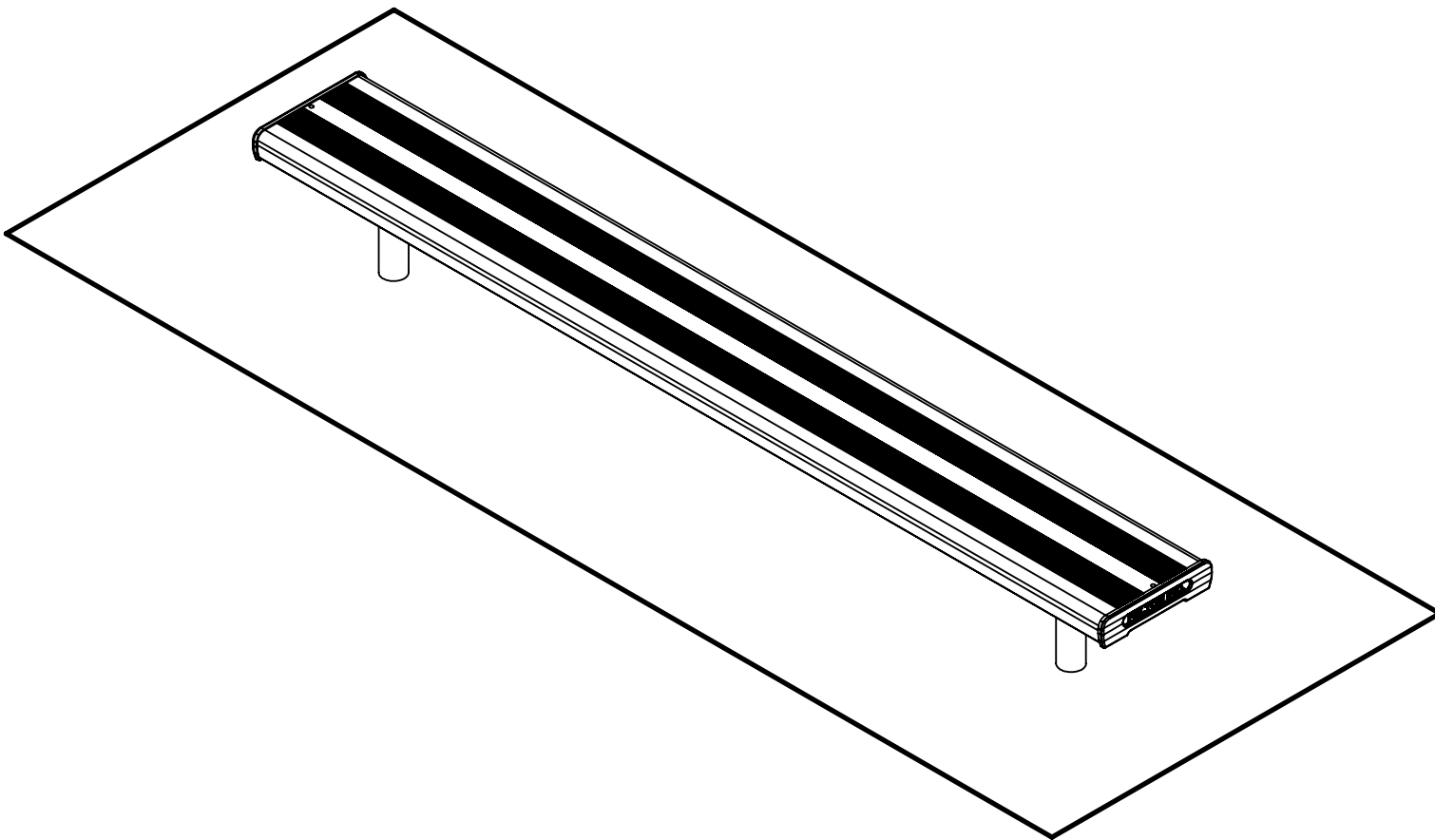
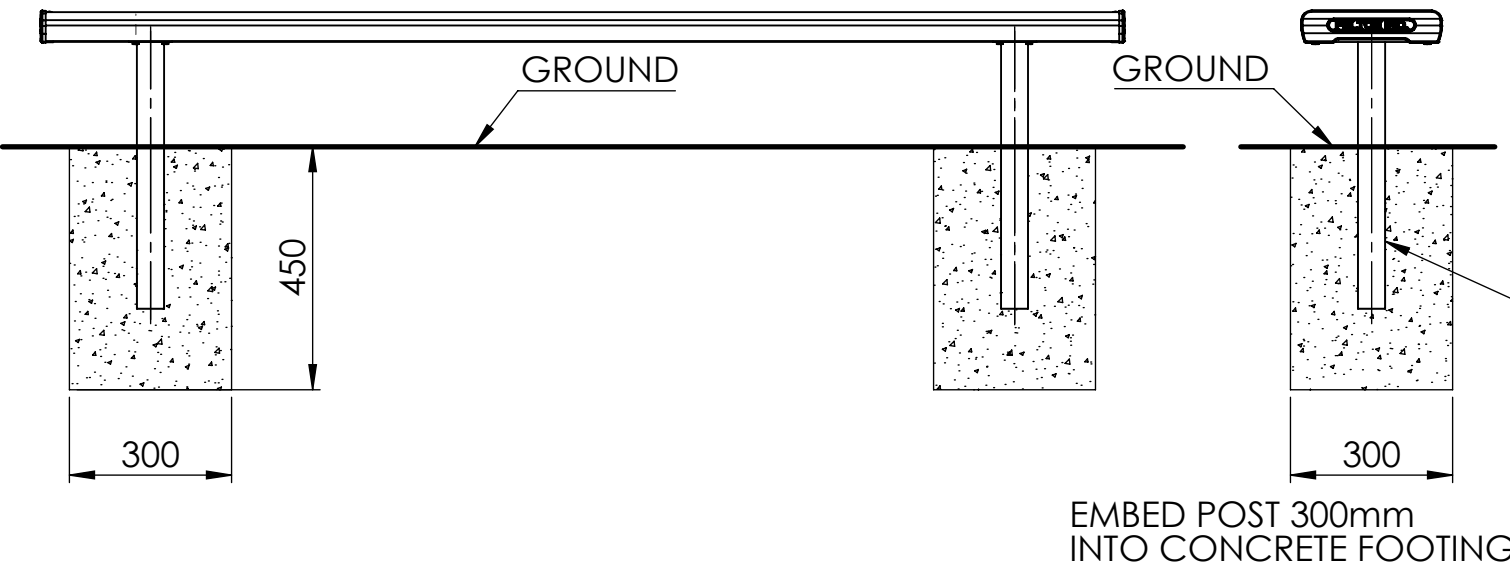


1



Attach the seat plank (2) to two leg supports (1) by using bolts (3) and nuts (4) as illustrated.

2



Tighten all hexagonal head bolts with spanners and appropriate tools. Then embed the structure min.300mm to the ground. Refer to "specification drawing" for detailed engineering requirement.