

ASSEMBLY INSTRUCTION

Thank You

FOR CHOOSING FELTON INDUSTRIES

FREE STANDING BUDDY BENCH  
WITH BACKREST  
[Code No: PSFSB2-BB]



"This product has been  
manufactured in Australia to the  
highest quality standard,  
guaranteeing proven quality,  
durability and low maintenance"



1800 22 00 55 1800 05 91 58  
sales@felton.net.au www.felton.net.au

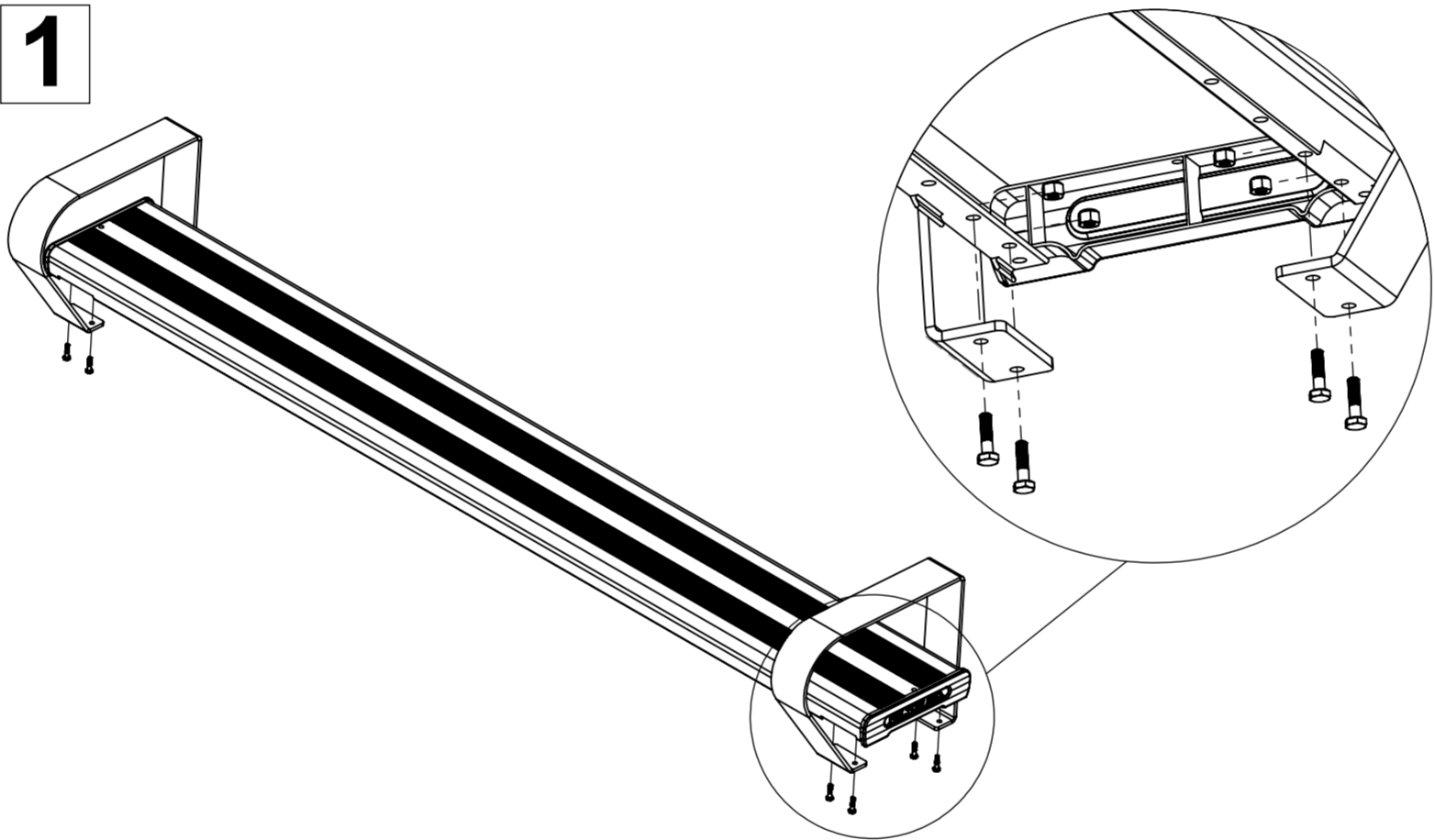
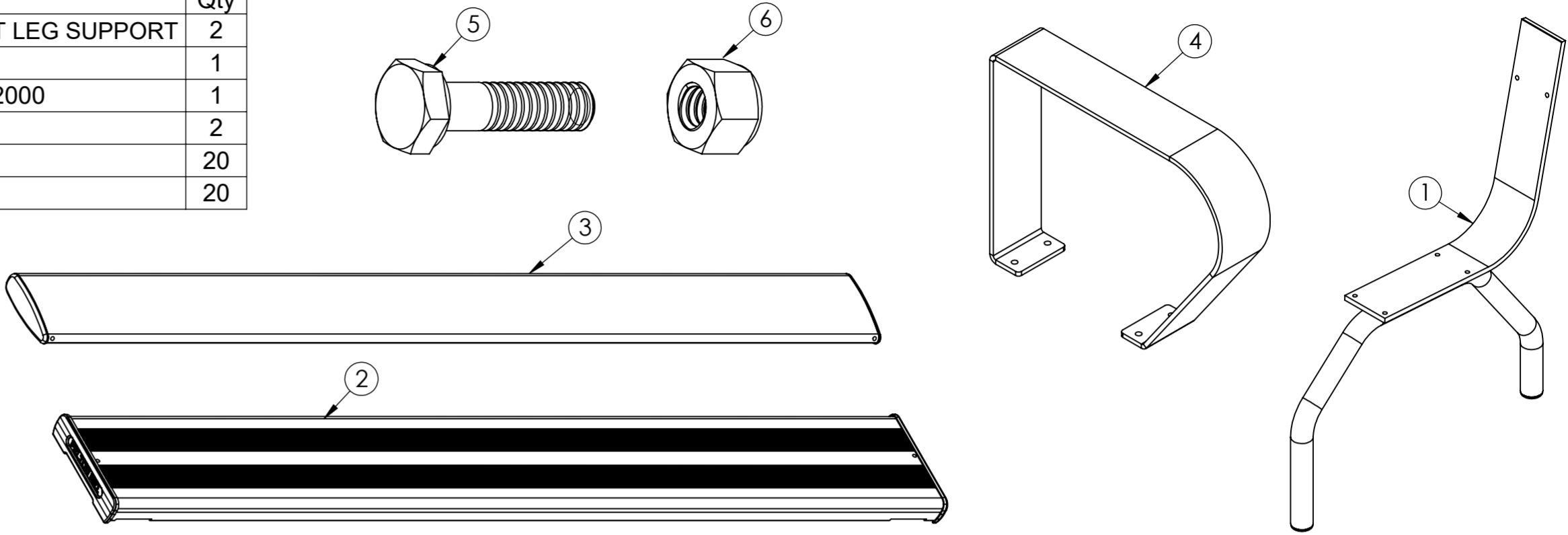


Felton Industries Pty Ltd | ABN: 17 130 687 240

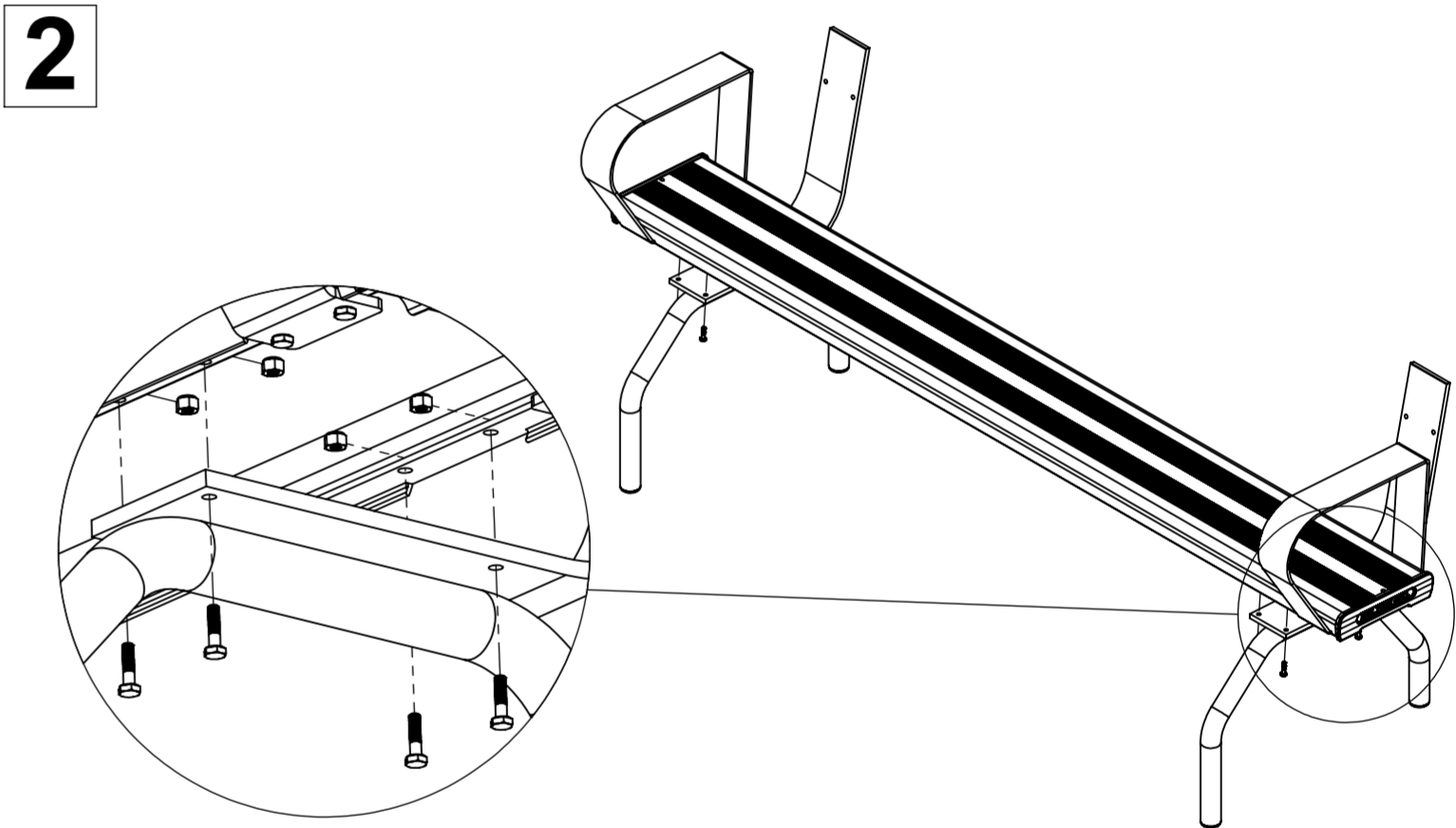


WARNING: This assembly required two or more people as lifting is involved. Please ensure bolts and nuts are only finger-tightened throughout assembly for flexibility in lining up components. Bolt and nuts should be securely tightened in place when instructed to do so. Please check all components are included before proceeding with the assembly

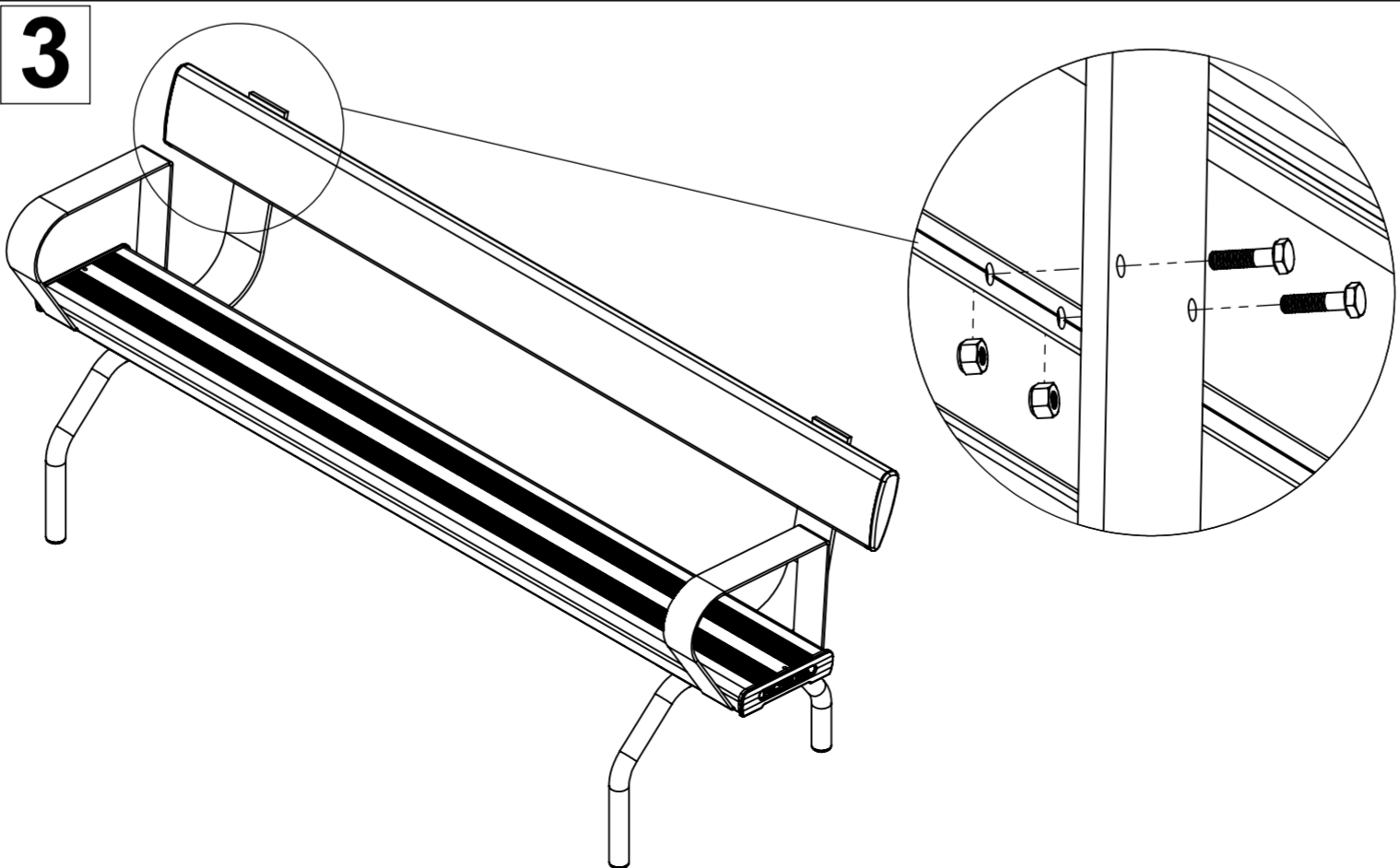
ITEM	DESCRIPTION	Qty
1	PSFSBLS_ FREE STANDING BACKREST LEG SUPPORT	2
2	FEL-BB_BUDDY SEAT PLANK L2000	1
3	FEL-BB_BUDDY BACKREST PLANK L2000	1
4	FEL-BB_BUDDY ARMREST	2
5	AS-NZS 2465 Bolt - 1/4" x 1"	20
6	AS-NZS NYLON Nut - 1/4"	20



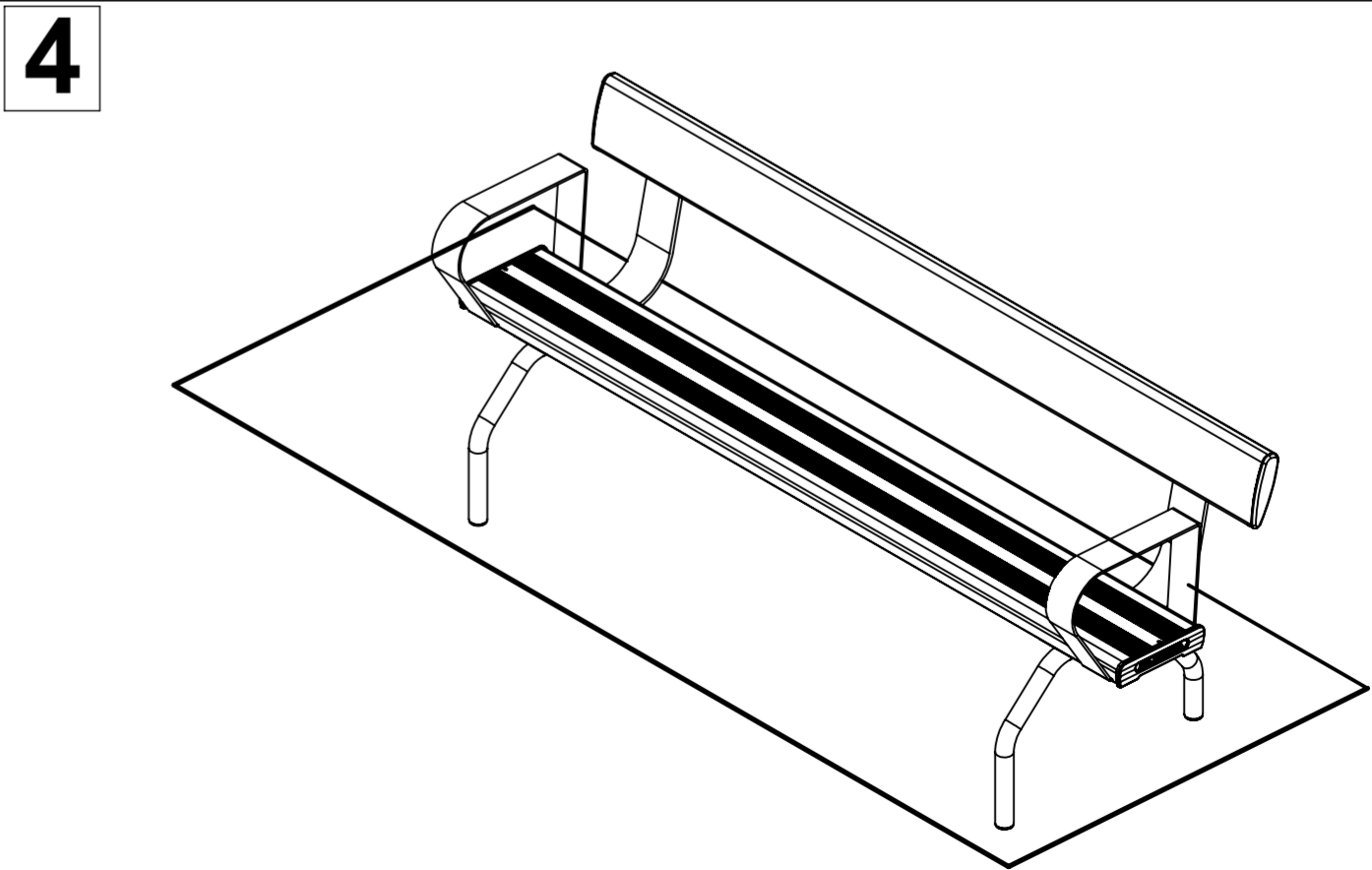
Attach two armrests (4) to the seat plank (2) by using bolts (5) and nuts (6) as illustrated.



Attach the assembly in step 1 to two leg supports (1) by using bolts (5) and nuts (6) as illustrated.



Attach the backrest plank (3) to the assembly in step 2 by using bolts (5) and nuts (6) as illustrated.



Tighten all hexagonal head bolts with spanners and appropriate tools.