

# ASSEMBLY INSTRUCTION

*Thank You*

FOR CHOOSING FELTON INDUSTRIES

**BURRADAMBANG BENCH SEAT WITH BACKREST**  
[Code No: TRRBSBS]



"This product has been manufactured in Australia to the highest quality standard, guaranteeing proven quality, durability and low maintenance"



☎ 1800 22 00 55

🖨 1800 05 91 58

✉ sales@felton.net.au

🌐 www.felton.net.au

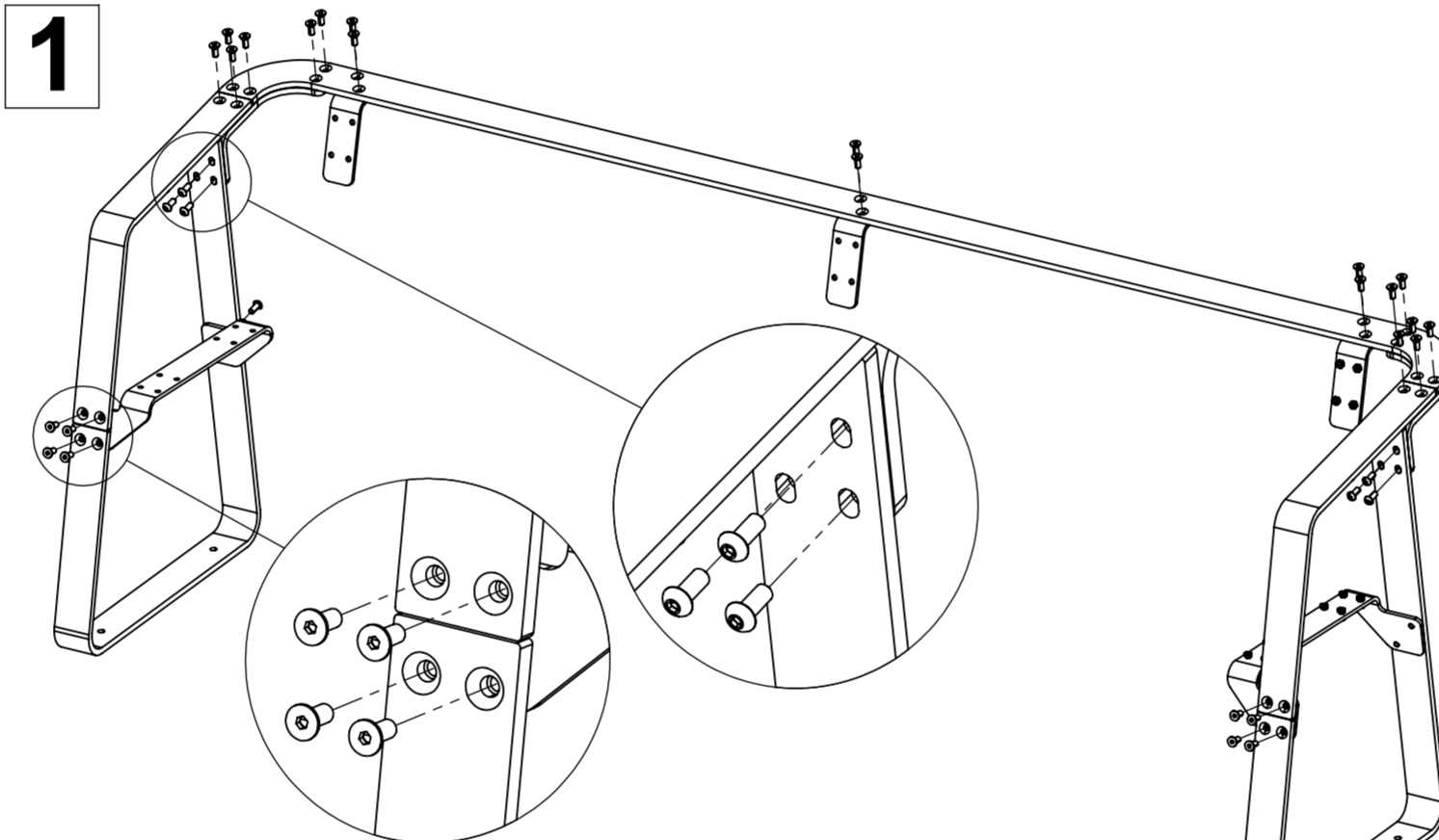
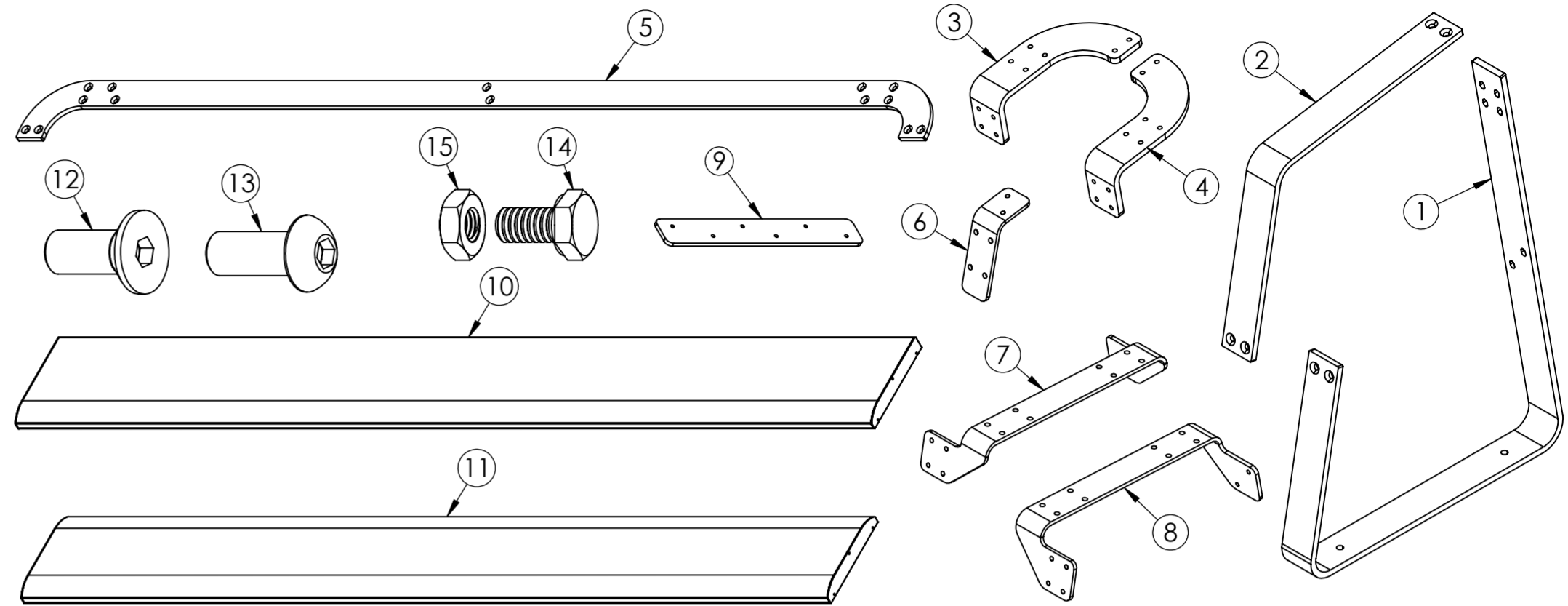


Felton Industries Pty Ltd | ABN: 17 130 687 240

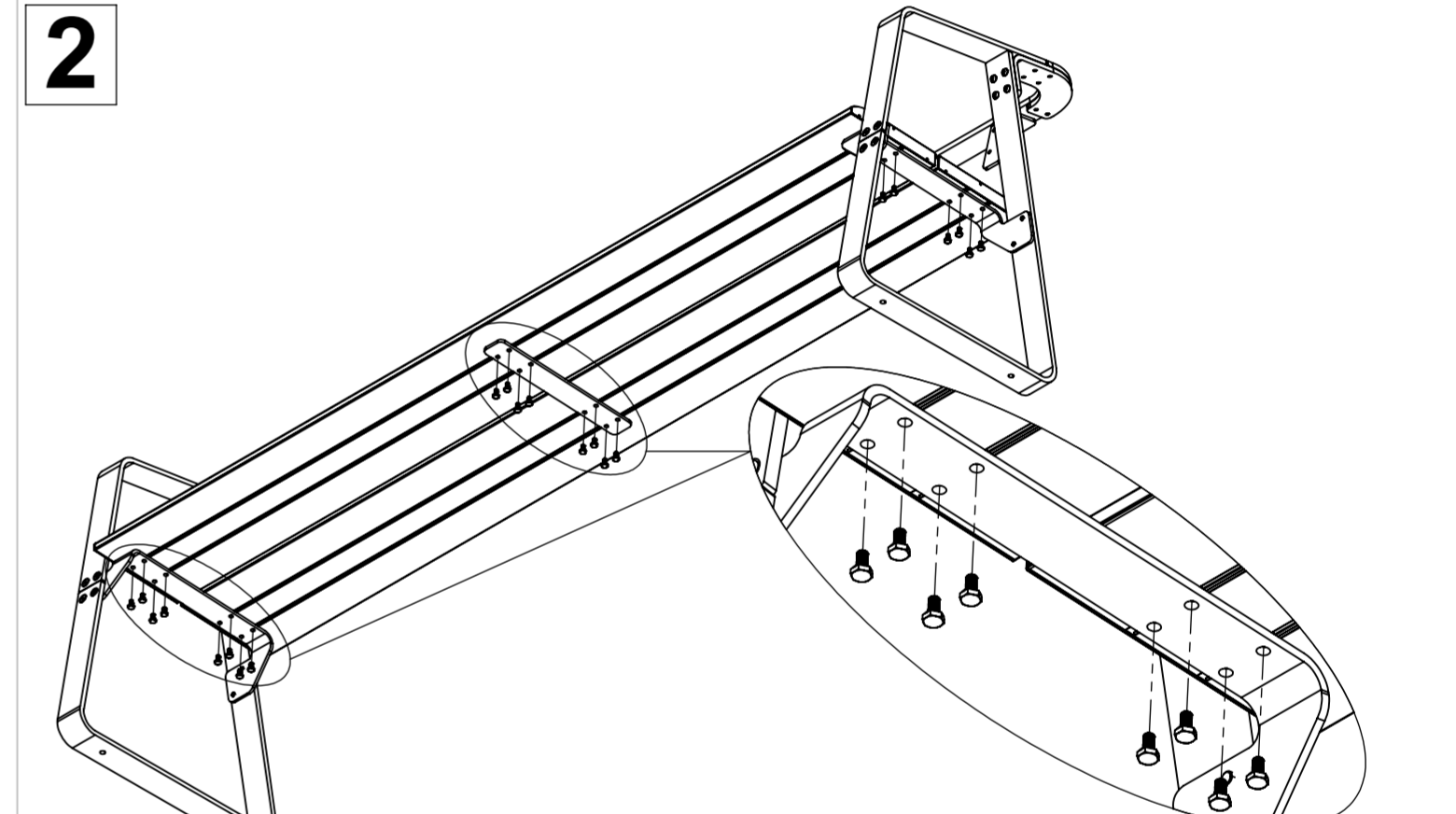


**WARNING:** This assembly required two or more people as lifting is involved. **Please ensure bolts and nuts are only finger-tightened throughout assembly for flexibility in lining up components.** Bolt and nuts should be securely tightened in place when instructed to do so. Please check all components are included before proceeding with the assembly

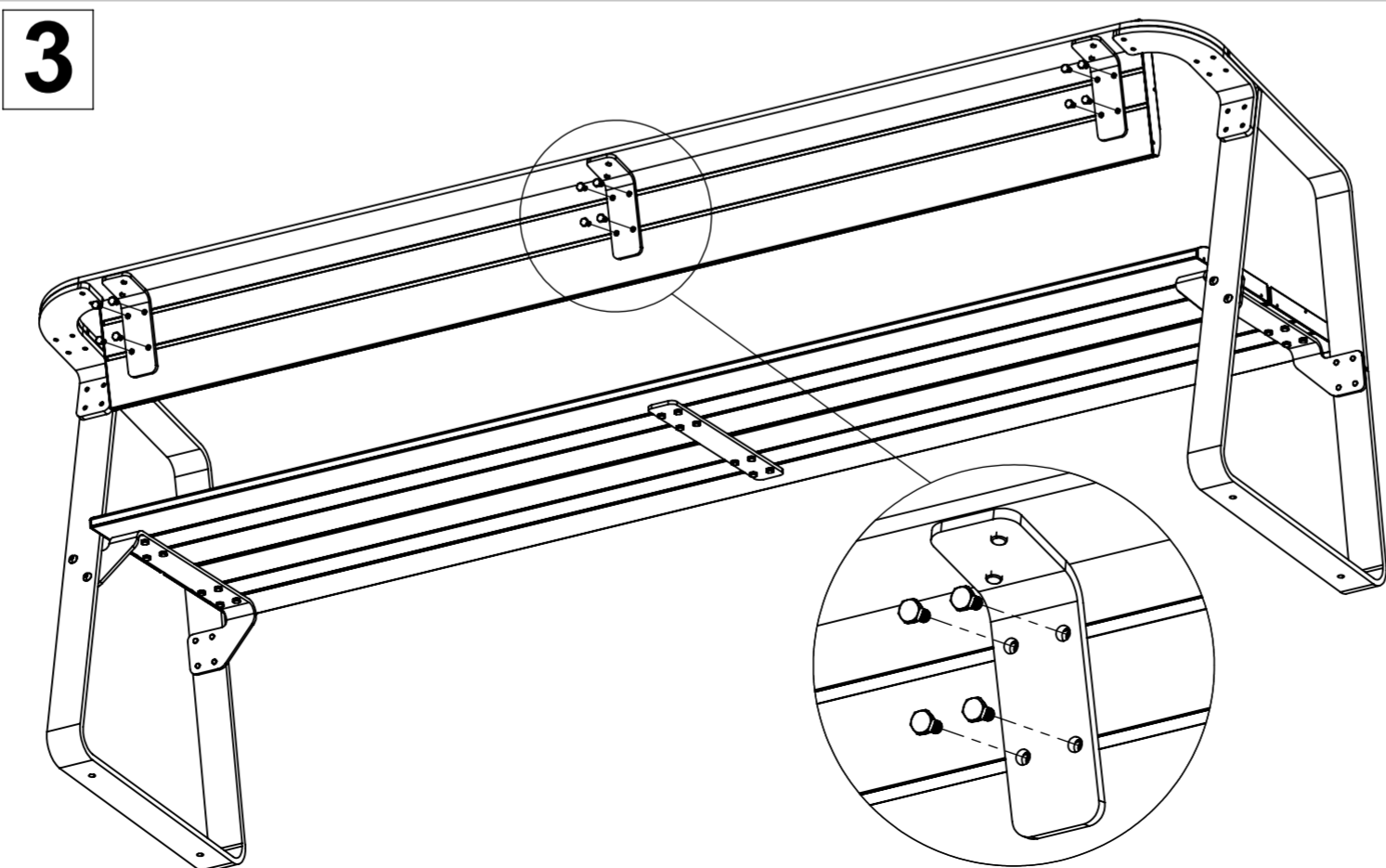
ITEM	DESCRIPTION	Qty
1	TRRBSBS_FRAME BRACKET BOTTOM	2
2	TRRBSBS_FRAME BRACKET TOP	2
3	TRRBSBS_CONNER BRACKET LHS	1
4	TRRBSBS_CONNER BRACKET RHS	1
5	TRRBSBS_BACK BEAM	1
6	TRRBSBS_BACKREST L BRACKET	3
7	TRRBSBS_SEAT BRACKET LHS	1
8	TRRBSBS_SEAT BRACKET RHS	2
9	TRRBSBS_STRAP	1
10	TRRBSBS_SEATING PLANK	2
11	TRRBSBS_BACKREST PLANK	1
12	CSK HEAD SCREW_ISO 10642 - M8 x 20	26
13	BUTTON SCREW_ISO 7380 - M8 x 20	12
14	AS-NZS 2465 Bolt - 0.25in x 0.5in	36
15	AS-NZS Nut - 0.25in	36



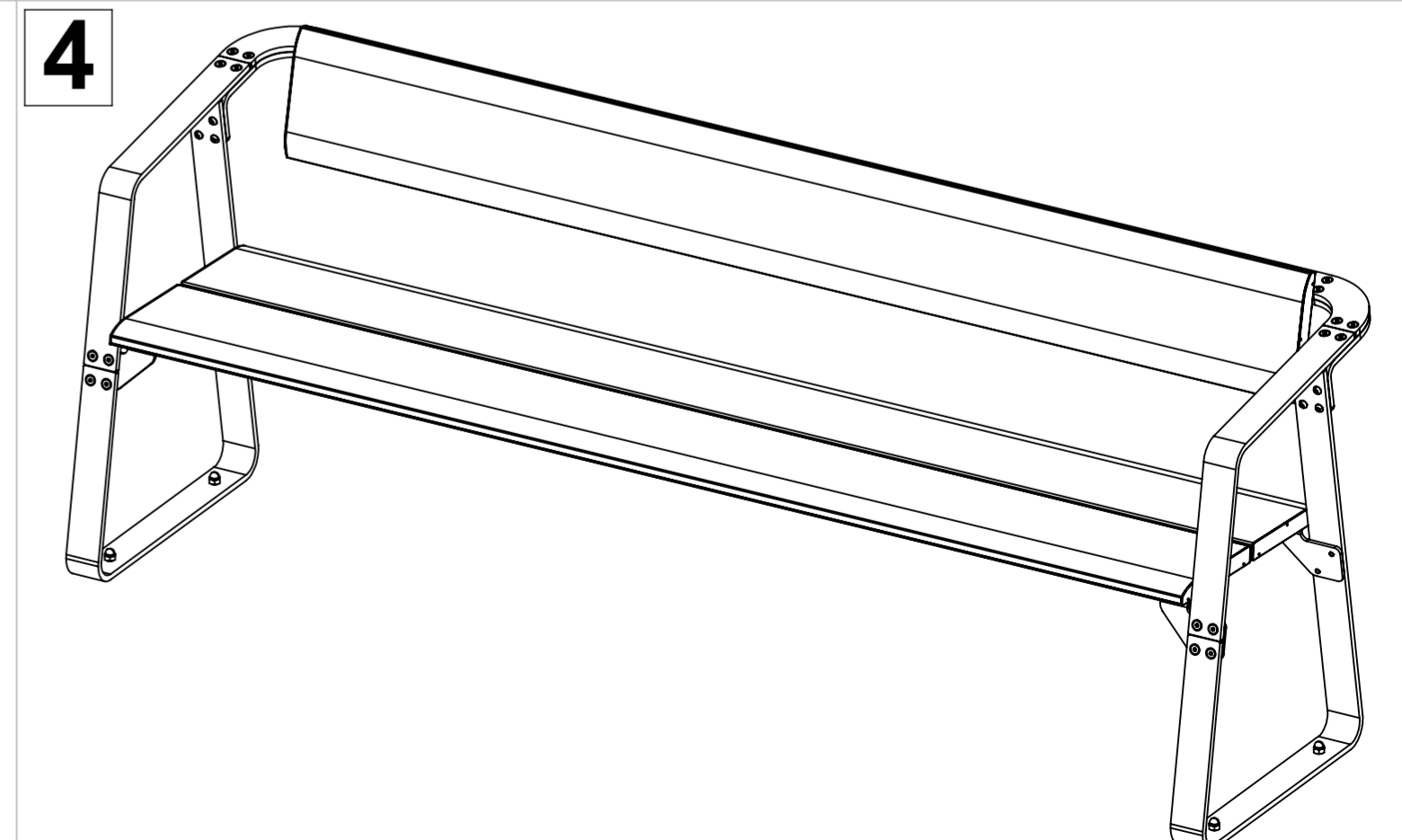
Attach all frame items ①; ②; ③; ④; ⑤; ⑥; ⑦ & ⑧ together by using bolts ⑫ & ⑬ to create the main frame as illustrated



Attach two seating planks ⑩ to the main frame in step 1 by using bolts ⑭ and nuts ⑮. Then attach the strap ⑨ beneath two seating planks ⑩ as illustrated.



Attach backrest plank ⑪ to the main frame in step 1 as illustrated.



Attach the whole assembly to the ground by using M10 dyna-bolts preferably, on each side frame.